



Up-to-date Questions and Answers from authentic resources to improve knowledge and pass the exam at very first attempt. ----- Guaranteed.



HPE6-A80 Dumps
HPE6-A80 Braindumps
HPE6-A80 Real Questions
HPE6-A80 Practice Test
HPE6-A80 Actual Questions



HP

HPE6-A80

Aruba Certified Design Expert Written



Question: 96

A retailer wants to add a wireless network to its stores to provide guest access. The store has wired POS systems which the customer will now replace with wireless systems.


What is one Important security action that the wireless solution supports to comply with PCI DSS?

- A. Use test-practice, factory default settings for security settings and login credentials.
- B. Implement TKIP encryption on the wireless network used by POS devices.
- C. Impose mandatory clean up periods to delete records of user access to controllers
- D. Enforce role-based access control on administrators who access controllers

Answer: A

Question: 97

Refer to the exhibit.



Line#	Part Number	Description	Manufacturer
1.00	JW736A	Aruba 7205 (US) 2-port 10GBASE-X (SFP+) Controller	Hewlett Packard Enter...
1.01	H3CW3E	Aruba 1Y FC NBD Exch 7205 Controller SVC [for JW736A]	Hewlett Packard Enter...
1.02	JW091A	SFP-10GE-SR 10GBASE-SR SFP+ 850nm Pluggable LC Conn...	Hewlett Packard Enter...
2.00	JL323A	Aruba 2930M 40G 8 Smart Rate PoE+ 1-slot Switch	Hewlett Packard Enter...
2.01	HT6U1E	HPE 3Y FC 4H Exch Aruba2930MSRPOE SVC [for JL323A]	Hewlett Packard Enter...
2.02	JL086A	Aruba X372 54VDC 680W Power Supply	Hewlett Packard Enter...
2.03	JL086A ABA	INCLUDED: Power Cord - U.S. localization	Hewlett Packard Enter...
2.04	JL325A	Aruba 2930 2-port Stacking Module	Hewlett Packard Enter...
2.05	JL083A	Aruba 3810M/2930M 4SFP+ MACsec Module	Hewlett Packard Enter...
2.06	J9150D	Aruba 10G SFP+ LC SR 300m MMF Transceiver	Hewlett Packard Enter...
3.00	J9821A	Aruba 5406R zl2 Switch	Hewlett Packard Enter...
3.01	H1MT0E	HPE 3Y FC 24x7 Aruba 5406R zl2 Switc SVC [for J9821A]	Hewlett Packard Enter...
3.02	U4832E	HPE Networks 54xx/82xx zl Startup SVC [for J9821A]	Hewlett Packard Enter...
3.03	J9828A	Aruba 5400R 700W PoE+ zl2 PSU	Hewlett Packard Enter...
3.04	J9828A ABA	INCLUDED: Power Cord - U.S. localization	Hewlett Packard Enter...
3.05	J9993A	Aruba 8p 1G/10GbE SFP+ v3 zl2 Mod	Hewlett Packard Enter...
3.06	J9150D	Aruba 10G SFP+ LC SR 300m MMF Transceiver	Hewlett Packard Enter...
3.07	J4858D	Aruba 1G SFP LC SX 500m MMF Transceiver	Hewlett Packard Enter...
3.08	J9996A	Aruba 2p 40GbE QSFP+ v3 zl2 Mod	Hewlett Packard Enter...
3.09	JL308A	Aruba 40G QSFP+ LC BIDI 150m MMF 2-strand Transceiver	Hewlett Packard Enter...
4.00	JH234A	HPE X242 40G QSFP+ to QSFP+ 1m DAC Cable	Hewlett Packard Enter...

The network architect has created the 60M shown in the exhibit for a complete new wired and wireless solution for a customer. This solution the customer wants to discover and manage every component on the network in Airwave, including switches, MCS, APS, and switches.

How many AirWave licenses does the architect need to add?

- A. 30
- B. 222
- C. 7122
- D. 6930

Answer: A

Question: 98

An indoor basketball stadium has 5,000 seats in two rings:

• The stadium has a ceiling height of 60 feet (18 m).

• There is a catwalk around the perimeter of the basketball court, between the court and the seating areas.

• This catwalk is 40 feet (12 m) from the floor.

• There are two scoreboards at either end of the stadium.

• The construction of the stadium is concrete and steel.

The customer does not want an under-seat, picocell deployment.

Which AP model is appropriate to provide coverage in the main stadium bowl?

- A. AP-577
- B. AP-555
- C. AP-575
- D. AP-505

Answer: A

Question: 99

A network architect needs to plan quality of service (QoS) for a hospital network.

Which of these applications should receive the highest priority?

- A. streaming IPTV in lobbies
- B. cloud-based scheduling software
- C. MRI image transfer
- D. wireless voice communicator devices

Answer: B

Question: 100

Refer to the exhibit.

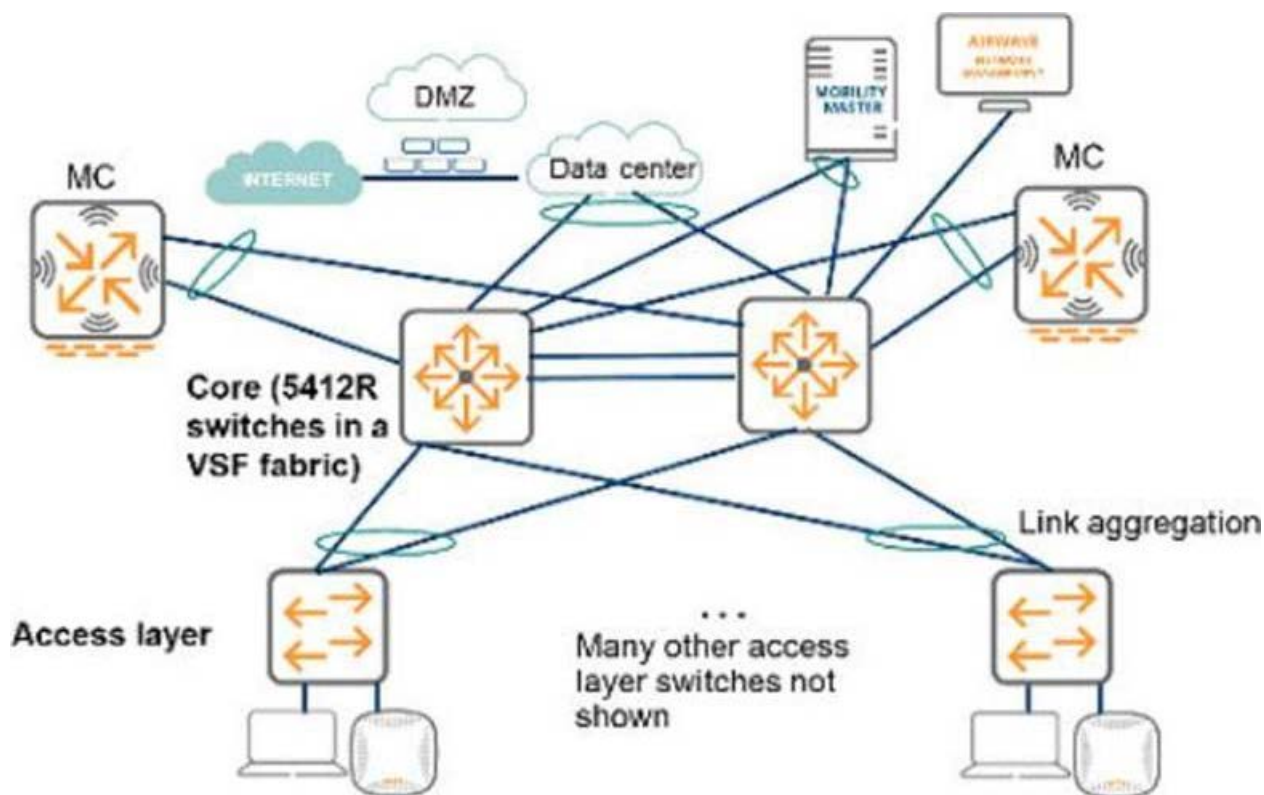


Exhibit: A49.01114316-12

The exhibit shows the design for an existing network. The customer intends to replace the current Core switches with two Aruba 8400 switches.

What are two points that the architect should ensure that the customer understands? (Select two.)

- A. The 8400 switches do not support VS
- B. The 8400 switches cannot be monitored by AirWave.
- C. The 8400 switches run different software than the 5400R switches.
- D. The 8400 switches have a smaller ARP table than the 5400R switches.
- E. The 8400 switches are fixed port switches.

Answer: B,C

Question: 101

A mall requires a wireless network upgrade to 802.11n. The company that owns the mall wants to provide the APs for the entire mall. However, several of the larger national chain retailers with spaces in the mall want to offer wireless services with their own SSIDs.

These individual retailers also have their own wireless guest services and wireless client devices. They have their own corporate infrastructure and want to handle all of this wireless traffic on their own, including terminating the traffic on their own controllers. The mall requires redundancy for its services, but the retailers do not.

Which plan for mobility controllers (MCs) and mobility master (MW) meets the needs of this scenario?

- A. a pair of MMs for the mall company, but not MCs: MMs control one MC for each retailer with its own SSIDs
- B. two MCs for the mall company and for all of the retailers, both controlled by the same pair of MMs
- C. two MCs for the mall company controlled by a pair of MMs; one standalone MC for each retailer with its own

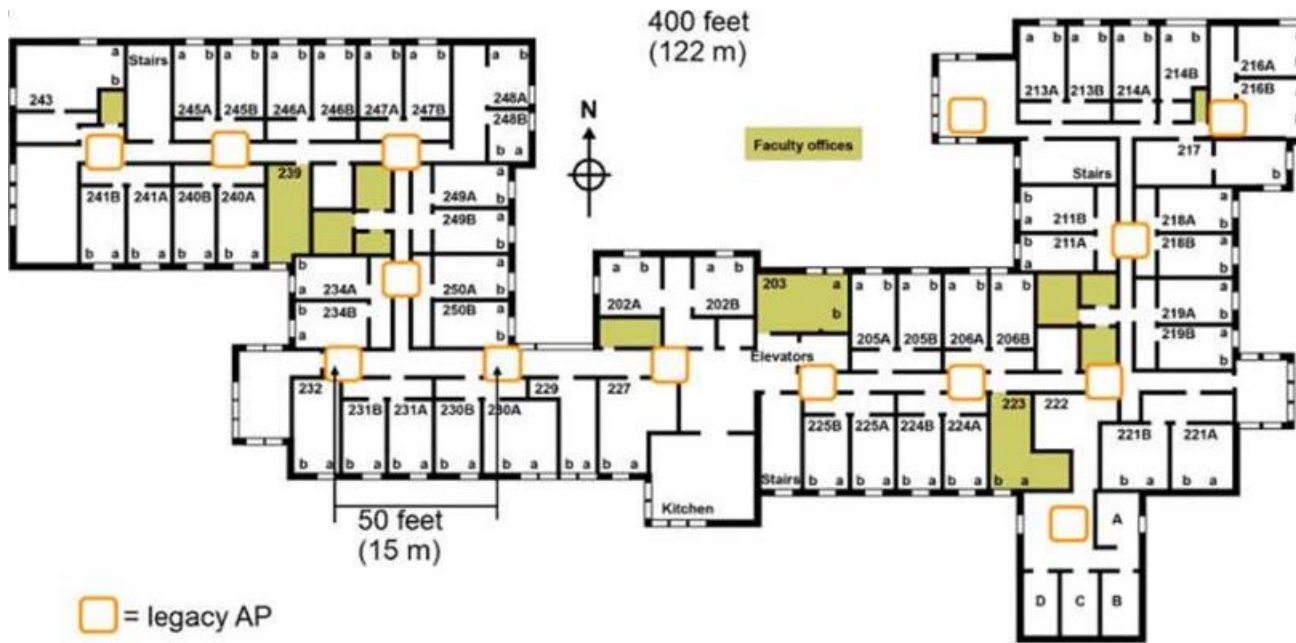
SSIDS

D. two MCs for the mall company and one MC for each retailer with its own SSIDs, all controlled by the same pair of MMs

Answer: A

Question: 102

Refer to the exhibit.



The exhibit shows the current AP deployment in a school. This customer indicates that the current wireless performance is inadequate and w B02.11ax.

For the new' solution, what should the network architect recommend?

- A. APs deployed in rooms with a density-based design
- B. APs deployed in similar locations, but with dual 5 GHz radios
- C. APS deployed in similar locations, but with higher gain antennas
- D. APs deployed in hallways with about twice the density

Answer: D

Question: 103

A customer has an Aruba wireless network, which includes two MC 7205s and an MM at the network core. The company now wants to accommodate 50 mobile trainers These trainers travel around the world and run training events. The trainers often need to access materials in the company data center, but cannot reach materials when they are on the road.

The company wants to give the mobile workforce a secure way to reach the materials they need no matter where they are.

including in public spaces like the hotels where they often leach. The customer also requires that the solution be as cost effective as possible while meeting the requirements.

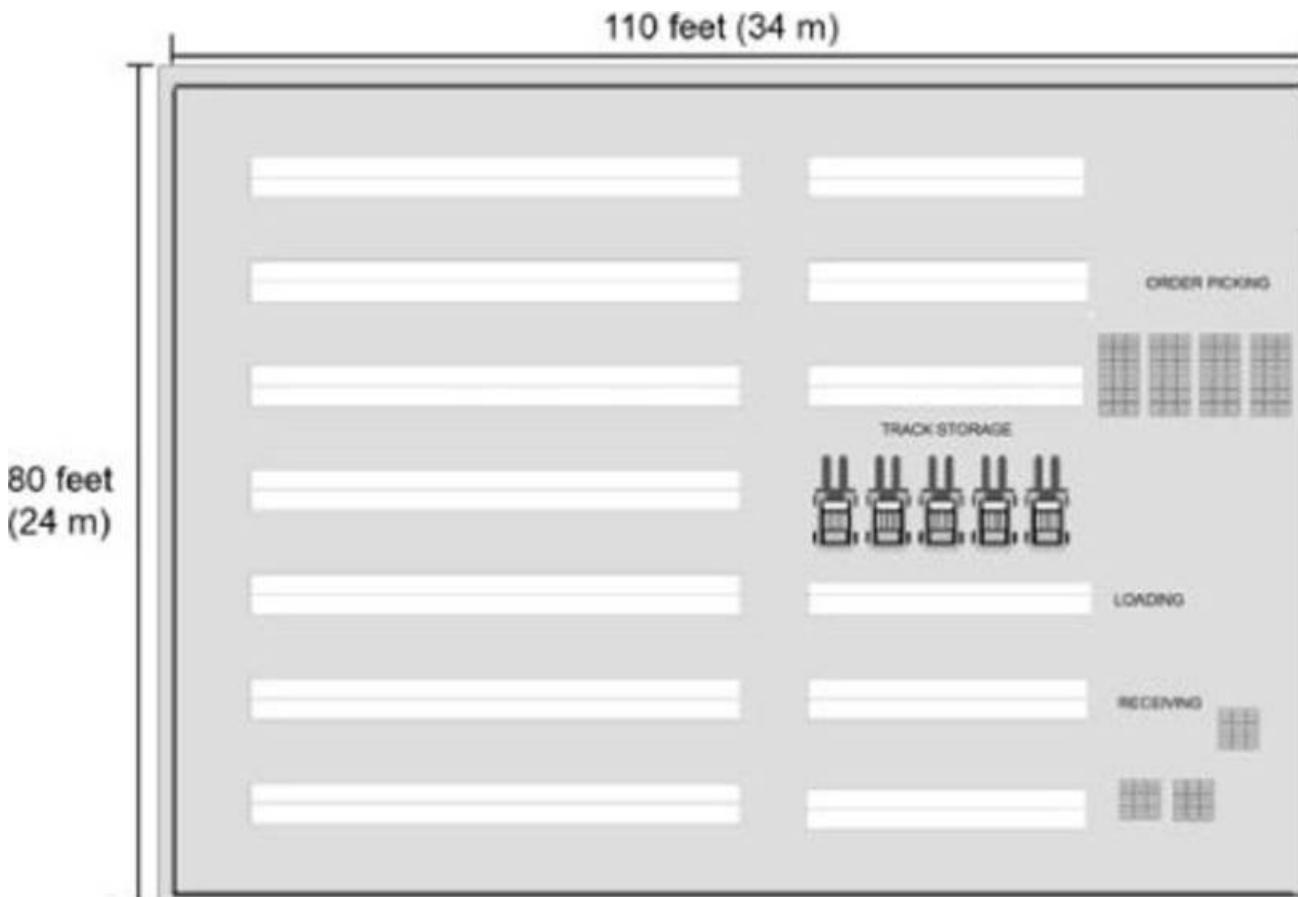
Which plan meets the needs of the mobile Trainers?

- A. Add 50 RAPs; add 50 Enterprise licenses to the MM, and add two 7005 MCs in the DM
- B. Add 50 RAPs; add 50 Enterprise licenses and 50 VIA licenses to the MM
- C. Add so PEFV licenses to the M
- D. and add an additional 7205 MC to the core.
- E. Add 50 VIA licenses to the MM, and deploy two 7005 MCs in the DM

Answer: D

Question: 104

Refer to the exhibit.



This warehouse has the dimensions shown in the exhibit. The warehouse is 20 feet (6 m) high up to a steel railing on the ceiling. The shelves are about 16 feet (5m) high, and they hold large containers filled with fluid and metal equipment.

The customer needs consistent wireless coverage throughout the warehouse, mostly to support the tablets that employees use to run Inventory tracking and other applications. The warehouse staff works in shifts of 20.

The architect has selected AP-515S.

About how many APs should the architect propose?

- A. about 13-16

- B. about 23-32
- C. about 6-8
- D. about 6-4

Answer: C

Question: 105

Refer to the exhibit.

Quotation - Composite View				
Quote View				
Quotation Browser				
Views Filters				
- Composite -				
Site 1				
Line#	Part Number	Description	Manufacturer	
1.00	JZ092AAE	Aruba Meridian Blue Dot Nav 1yr E-STU	Hewlett Packard Enter...	
1.01	JZ095AAE	Aruba Meridian Campaigns 1yr E-STU	Hewlett Packard Enter...	
		Quote Total		

A stadium wants to deploy location-based services, including blue-dot wayfinding over a 200.000 square root (isr580 sq. m) area. The custom past particular areas. The customer has selected a 1 year subscription.

The exhibit shows the BOM that the architect created in iris.

Which correction should the architect make?

- A. Change the campaign subscription to a Maps subscription.
- B. Add two Maps subscriptions.
- C. Add another campaign subscription.
- D. Remove one Blue Dot Nav subscription.

Answer: A

Question: 106

Refer to the exhibit.

Quote View									
Quotation Browser									
Views Filters									
- Composite -									
Site0									
Line#	Part Number	Description	Manufacturer	Unit Price	Quantity	Total	Price List		
1.0	JN744A	Aruba 7210 (US) 4p 10GBase-X (SFP+) 2p Dual Port (10/1...	Hewlett Packard Enter...	\$17,045.00	2	\$35,690.00	USA Price List (USD)		
1.1	H0D8UE	Aruba 1Y FC NBD Each 7210 Controller SVC [for JN744A]	Hewlett Packard Enter...	\$2,618.00	2	\$5,236.00	USA Price List (USD)		
1.2	JN057A	Aruba P91-350-AC 7206 Series S3506-24T S3506-48T and...	Hewlett Packard Enter...	\$529.00	2	\$1,040.00	USA Price List (USD)		
1.3	JN12FA	PC AC NA North America AC Power Cord	Hewlett Packard Enter...	\$5.00	4	\$20.00	USA Price List (USD)		
2.0	JZ337A	Aruba AP-525 (US) Unified AP	Hewlett Packard Enter...	\$1,579.00	290	\$624,660.00	USA Price List (USD)		
2.1	H06C9C	Aruba 1Y FC NBD Each AP 525 SVC [for JZ337A]	Hewlett Packard Enter...	\$66.00	290	\$26,260.00	USA Price List (USD)		
2.2	Q9069A	AP-88T-MP10-B AP mount bracket 10-pack B [split order]	Hewlett Packard Enter...	\$205.00	39.8	\$8,159.00	USA Price List (USD)		
3.0	JY791A	Aruba 88-MW-1K Mobility Router 1080 AP MW Appliance	Hewlett Packard Enter...	\$18,899.00	1	\$18,899.00	USA Price List (USD)		
3.1	H0Q65H	Aruba 1Y FC NBD Each 88-MW-1K Mob1900SVC [for JY791...	Hewlett Packard Enter...	\$2,779.00	1	\$2,779.00	USA Price List (USD)		
3.2	JN471AAG	Aruba LJC-ENT Enterprise (LJC-AP LJC-PGF LJC-RFF and LJC...	Hewlett Packard Enter...	\$200.00	400	\$120,000.00	USA Price List (USD)		
3.3	H2WV0C	Aruba AP-525 (US) License On Bundle SVC [for JN471AAG]	Hewlett Packard Enter...	\$46.00	400	\$18,400.00	USA Price List (USD)		
4.0	JZ337A	Aruba AP-525 (US) Unified AP	Hewlett Packard Enter...	\$1,579.00	2	\$3,140.00	USA Price List (USD)		
4.1	H0Q65H	Aruba 1Y FC NBD Each AP 525 SVC [for JZ337A]	Hewlett Packard Enter...	\$66.00	2	\$1,32.00	USA Price List (USD)		
4.2	RJ16A	AP-88T-B AP mount bracket individual B: suspended ceiling...	Hewlett Packard Enter...	\$30.00	2	\$60.00	USA Price List (USD)		
Quote Total						\$964,670...			

A customer needs to create a proposal for a full wireless solution for a customer. The customer has indicated that the MCs will connect to Aru&a CX Switches at the core and the APs will connect to PoE-i- switches at the edge. The customer requires that the wireless solution support at least 50 Mbps concurrently per AP. The architect has created a

BOM for a Mobility Master (MM), two MC 7210s, and 400 AP-535S. The exhibit shows this BOM.

Which components has the architect forgotten?

- A. SFP+ transceivers for the MC connections
- B. Smart Rate PoE+ injectors for the APs
- C. Mounting Kits for the MOs and MM
- D. Sufficient Enterprise licenses for the APs on both MCs

Answer: C

Question: 107

An architect needs to plan a Mobility Master (MM) solution for a customer. Requirements include:

- * redundancy for the MM
- * redundancy for the MCS (seamless failover if up to one fails). The wireless network consists of
 - * total APs - 300
 - * total wireless devices = 20,000
 - * total MCs = 10

The customer wants the most cost-effective plan that meets the requirements.

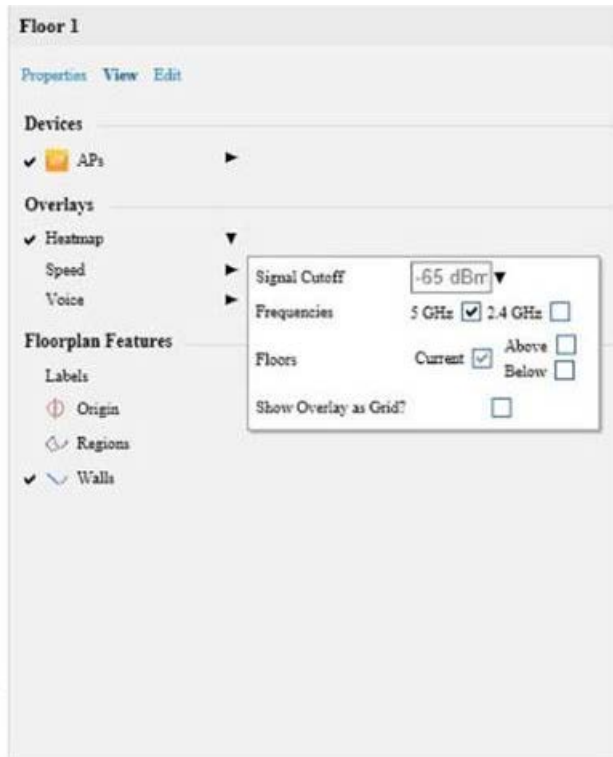
Which plan for MMs should the architect select?

- A. 1 MM-HW-5K and 1 MM-VA-1K
- B. 2 MM-HW-5K
- C. 1 MM-HW-5K and 1 MM-HW-1K
- D. 2 MM-HW-1QK

Answer: D

Question: 108

Refer to the exhibit.



A hospital needs an upgrade to 802.11ax for its wireless network.

The wireless network supports:

- * wireless medical devices
- * medical staff voice communicators
- * laptops in nurse stations
- * medical staff tablets
- * visitor and patient personal devices.

All of these devices support both the 2.4GHz and 5GHz band. Assuming about a max throughput of 50 Mbps per AP; the hospital would like. The architect has used VisualRF to plan the AP placement on one of the floors, which the

hospital expects will need to support about 800 users to deploy APs in stairwells between floors.

How well does the plan meet the requirements?

- A. The current AP placement meets coverage requirements, but does not meet capacity requirements.
- B. The current AP placement meets the customer requirements in terms of coverage and capacity.
- C. The current AP placement fails to account for the lead-lined walls that are common in patient and exam rooms.
- D. The current AP placement fails to provide adequate signal for the voice communicators in several areas

Answer: C

Question: 109

What is one customer requirement that can drive the need for a relatively dense AP deployment. In which coverage areas do at least three AP radios overlap?

- A. AP operation as hybrid APs for IDS/WIPS
- B. the deployment of dual 5GHz radio APs
- C. support for beacon management
- D. location tracking of wireless IoT devices

Answer: C

Question: 110

Refer to the exhibit.

A customer has an existing network with ArubaOS switches, Aruba 7205 controller, and 802.11ac APs. The customer needs a wired upgrade for their campus network and wireless upgrade with 802.11ax APs and would like to get all the functions of AP.

The customer has one building with 3 floors with the following wired devices,

* 200 VOIP phones

* 8 printers

* security cameras

The architect plans to propose 75 AP-535s.

The security cameras are a high definition pan-tilt-zoom with heaters for harsh

environments that require more than 45 W to function,

Which exhibit shows an access switch that meets the customer needs?

A)

Quotation - Composite View

Quote View

Quotation Bro... X

Views Filters

- Composite -

Main site

Filtered by Design Group (Design Group - (2))

Line#	Part Number	Description	Manufacturer	Unit Price
1.0	JZ337A	Aruba AP-535 (US) Unified AP	Hewlett Packard Enter...	\$1,570.00
1.1	HG6E5E	Aruba 1Y FC NBD Exch AP 535 SVC [for JZ337A]	Hewlett Packard Enter...	\$66.00
1.2	JZ370A	AP-MNT-MP10-A AP mount bracket 10-pack A [split order]	Hewlett Packard Enter...	\$205.00
2.0	JZ337A	Aruba AP-535 (US) Unified AP	Hewlett Packard Enter...	\$1,570.00
2.1	HG6E5E	Aruba 1Y FC NBD Exch AP 535 SVC [for JZ337A]	Hewlett Packard Enter...	\$66.00
2.2	R3J15A	AP-MNT-A AP mount bracket individual A: suspended ceiln...	Hewlett Packard Enter...	\$30.00
3.0	JL665A	Aruba 6300F 48G CL4 PoE 4SFP56 Switch	Hewlett Packard Enter...	\$11,199.00
3.1	JL665A	INCLUDED: Power Cord - U.S. localization	Hewlett Packard Enter...	incl.
3.2	HR5U1E	HPE 1Y FC NBD Exch Aruba6300F 48 PoE SVC [for JL665A]	Hewlett Packard Enter...	\$559.00
3.3	H8XE6E	HPE Aruba 6x00N800x Install Swt SVC [for JL665A]	Hewlett Packard Enter...	\$1,000.00
3.4	J9150D	Aruba 10G SFP+ LC SR 300m MMF Transceiver	Hewlett Packard Enter...	\$1,040.00

B)

Quotation - Composite View

Quote View

Quotation Bro... X

Views Filters

- Composite -

Main site

Filtered by Design Group (Design Group - (3))

Line#	Part Number	Description	Manufacturer	Unit Price
1.0	JL726A	Aruba 6200F 48G 4SFP+ Switch	Hewlett Packard Enter...	\$5,219.00
1.1	JL726A	INCLUDED: Power Cord - U.S. localization	Hewlett Packard Enter...	incl.
1.2	HR1E2E	Aruba 1Y FC NBD Exch 6200F 48G SVC [for JL726A]	Hewlett Packard Enter...	\$214.00
1.3	H8XE6E	HPE Aruba 6x00N800x Install Swt SVC [for JL726A]	Hewlett Packard Enter...	\$1,000.00
1.4	J9150D	Aruba 10G SFP+ LC SR 300m MMF Transceiver	Hewlett Packard Enter...	\$1,040.00
2.0	JZ337A	Aruba AP-535 (US) Unified AP	Hewlett Packard Enter...	\$1,570.00
2.1	HG6E5E	Aruba 1Y FC NBD Exch AP 535 SVC [for JZ337A]	Hewlett Packard Enter...	\$66.00
2.2	JZ370A	AP-MNT-MP10-A AP mount bracket 10-pack A [split order]	Hewlett Packard Enter...	\$205.00
3.0	JZ337A	Aruba AP-535 (US) Unified AP	Hewlett Packard Enter...	\$1,570.00
3.1	HG6E5E	Aruba 1Y FC NBD Exch AP 535 SVC [for JZ337A]	Hewlett Packard Enter...	\$66.00
3.2	R3J15A	AP-MNT-A AP mount bracket individual A: suspended ceiln...	Hewlett Packard Enter...	\$30.00
Quote Total				

C)

Quotation - Composite View

Quote View

Quotation Bro... X

Views Filters

- Composite -

Main site

Filtered by Design Group (Design Group - (1))

Line#	Part Number	Description	Manufacturer	Unit Price
1.0	JZ337A	Aruba AP-535 (US) Unified AP	Hewlett Packard Enter...	\$1,570.00
1.1	HG6E5E	Aruba 1Y FC NBD Exch AP 535 SVC [for JZ337A]	Hewlett Packard Enter...	\$66.00
1.2	JZ370A	AP-MNT-MP10-A AP mount bracket 10-pack A [split order]	Hewlett Packard Enter...	\$205.00
2.0	JZ337A	Aruba AP-535 (US) Unified AP	Hewlett Packard Enter...	\$1,570.00
2.1	HG6E5E	Aruba 1Y FC NBD Exch AP 535 SVC [for JZ337A]	Hewlett Packard Enter...	\$66.00
2.2	R3J15A	AP-MNT-A AP mount bracket individual A: suspended ceiln...	Hewlett Packard Enter...	\$30.00
3.0	JL659A	Aruba 6300M 48SR5 CL6 PoE 4SFP56 Switch	Hewlett Packard Enter...	\$15,499.00
3.1	HL6F6E	HPE 1Y FC NBD ExchAruba6300M48P SRPoESVC [for JL65...	Hewlett Packard Enter...	\$784.00
3.2	H8XE6E	HPE Aruba 6x00N800x Install Swt SVC [for JL659A]	Hewlett Packard Enter...	\$1,000.00
3.3	JL086A	Aruba X372 54VDC 680W Power Supply	Hewlett Packard Enter...	\$749.00
3.4	JL086A	INCLUDED: Power Cord - U.S. localization	Hewlett Packard Enter...	incl.
3.5	J9150D	Aruba 10G SFP+ LC SR 300m MMF Transceiver	Hewlett Packard Enter...	\$1,040.00
Quote Total				

D)

Quotation - Composite View					
Quote View					
Quotation Bro... X					
Filtered by Design Group (Design Group)					
Views	Filters	Line#	Part Number	Description	Unit Price
- Composite -		1.0	JL728A	Aruba 6200F 48G Class4 PoE 4SFP+ 740W Switch	\$7,449.00
Main site		1.1	JL728A ABA	INCLUDED: Power Cord - U.S. localization	incl.
		1.2	HL2K8E	Aruba 1Y FC NBD Exch 6200F 48G 740POESVC [for JL728A]	\$356.00
		1.3	H8XE6E	HPE Aruba 6xxxN8xxx Install Swt SVC [for JL728A]	\$1,000.00
		1.4	J9150D	Aruba 10G SFP+ LC SR 300m MMF Transceiver	\$1,040.00
		2.0	JZ337A	Aruba AP-535 (US) Unified AP	\$1,570.00
		2.1	HG6E5E	Aruba 1Y FC NBD Exch AP 535 SVC [for JZ337A]	\$66.00
		2.2	JZ370A	AP-MNT-MP10-A AP mount bracket 10-pack A [split order]	\$205.00
		3.0	JZ337A	Aruba AP-535 (US) Unified AP	\$1,570.00
		3.1	HG6E5E	Aruba 1Y FC NBD Exch AP 535 SVC [for JZ337A]	\$66.00
		3.2	R3J15A	AP-MNT-A AP mount bracket individual A: suspended ceilin...	\$30.00
		Quote Total			

- A. Option A
- B. Option B
- C. Option C
- D. Option D

Answer: D



SAMPLE QUESTIONS

*These questions are for demo purpose only. **Full version** is up to date and contains actual questions and answers.*

Killexams.com is an online platform that offers a wide range of services related to certification exam preparation. The platform provides actual questions, exam dumps, and practice tests to help individuals prepare for various certification exams with confidence. Here are some key features and services offered by Killexams.com:

Actual Exam Questions: *Killexams.com provides actual exam questions that are experienced in test centers. These questions are updated regularly to ensure they are up-to-date and relevant to the latest exam syllabus. By studying these actual questions, candidates can familiarize themselves with the content and format of the real exam.*

Exam Dumps: *Killexams.com offers exam dumps in PDF format. These dumps contain a comprehensive collection of questions and answers that cover the exam topics. By using these dumps, candidates can enhance their knowledge and improve their chances of success in the certification exam.*

Practice Tests: *Killexams.com provides practice tests through their desktop VCE exam simulator and online test engine. These practice tests simulate the real exam environment and help candidates assess their readiness for the actual exam. The practice tests cover a wide range of questions and enable candidates to identify their strengths and weaknesses.*

Guaranteed Success: *Killexams.com offers a success guarantee with their exam dumps. They claim that by using their materials, candidates will pass their exams on the first attempt or they will refund the purchase price. This guarantee provides assurance and confidence to individuals preparing for certification exams.*

Updated Content: *Killexams.com regularly updates its question bank and exam dumps to ensure that they are current and reflect the latest changes in the exam syllabus. This helps candidates stay up-to-date with the exam content and increases their chances of success.*

Technical Support: *Killexams.com provides free 24x7 technical support to assist candidates with any queries or issues they may encounter while using their services. Their certified experts are available to provide guidance and help candidates throughout their exam preparation journey.*

For More exams visit <https://killexams.com/vendors-exam-list>
Kill your exam at First Attempt....Guaranteed!